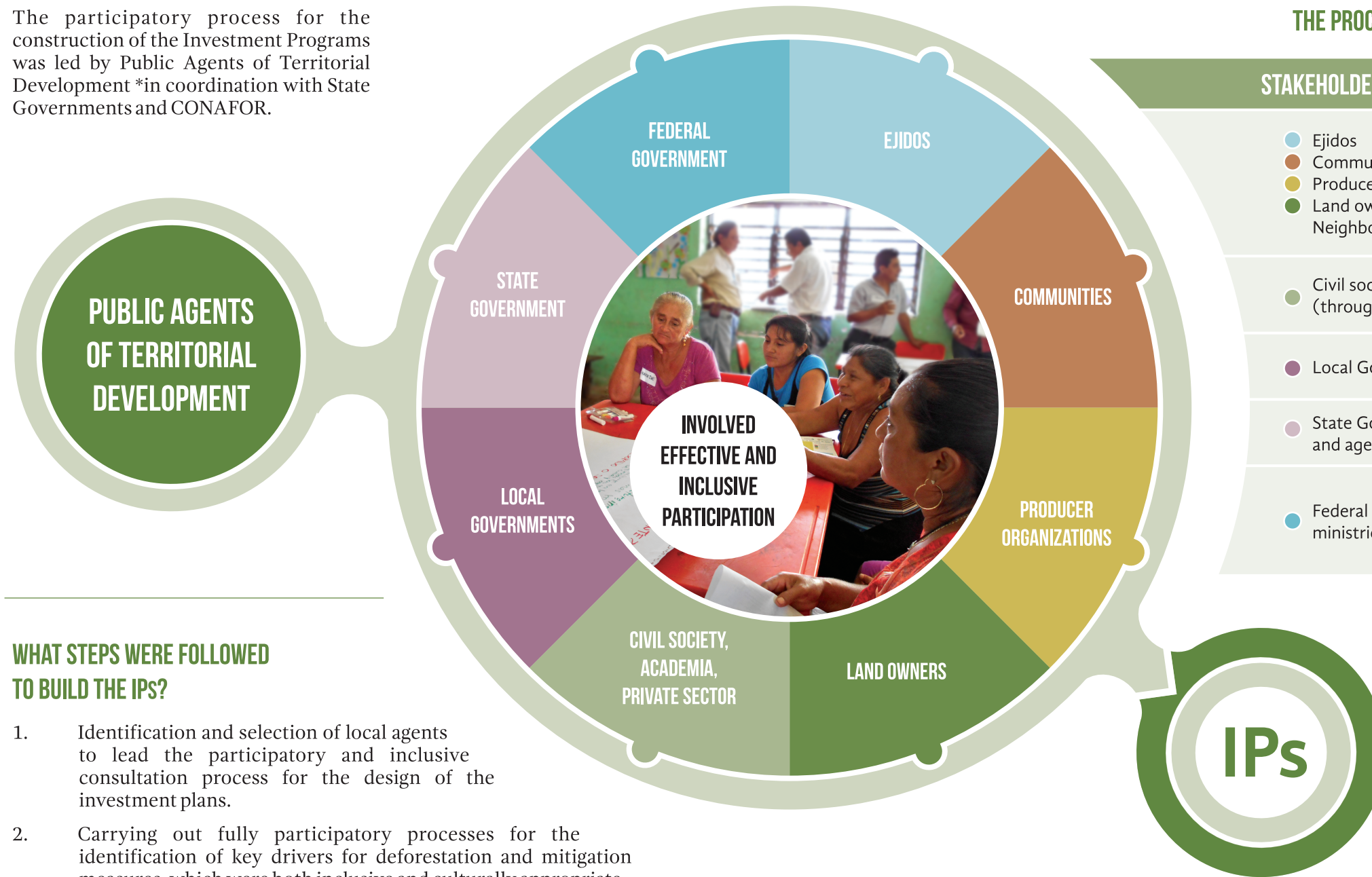


PARTICIPATORY PROCESS TO DEVELOP THE INVESTMENT PROGRAMS (IPs)

The participatory process for the construction of the Investment Programs was led by Public Agents of Territorial Development *in coordination with State Governments and CONAFOR.



THE PROCESS INVOLVED EFFECTIVE AND INCLUSIVE PARTICIPATION OF REPRESENTATIVES OF *:

STAKEHOLDER	ROLE
<ul style="list-style-type: none"> Ejidos Communities Producer organizations Land owners Neighbors (avecindados) 	Identified the needs to tackle the causes of deforestation and degradation at the local level.
<ul style="list-style-type: none"> Civil society, academia, private sector (through participation platforms) 	Provided feedback on the IPs.
<ul style="list-style-type: none"> Local Governments (Municipalities) 	Convened workshops, ensure resource optimization in the IPs by targeting sector programs to the most suitable sites.
<ul style="list-style-type: none"> State Government (several ministries and agencies) 	Strengthened the IPs according to the State vision, to ensure policies and programs alignment.
<ul style="list-style-type: none"> Federal Government (several ministries and agencies) 	Guided the IP development exercise, harmonize coordination, linked the local process with the ENAREDD + and the relevant national and international forestry and climate change policies.

WHAT STEPS WERE FOLLOWED TO BUILD THE IPs?

1. Identification and selection of local agents to lead the participatory and inclusive consultation process for the design of the investment plans.
2. Carrying out fully participatory processes for the identification of key drivers for deforestation and mitigation measures, which were both inclusive and culturally appropriate.
3. Elaboration of the investment programs in workshops with specific features.
4. Full feedback cycles that include the presentation of the programs to existing participatory and coordination platforms.
5. Approval of the plans through the official, interinstitutional platforms.

*APDT is a technical public agent with a mandate to promote integral rural development that works at a regional level, including i) strategic planning of the territory, ii) facilitating intergovernmental collaboration and the coordination of public policies at the regional and local levels, and iii) integrating the sustainable management of natural resources into planning processes.

* Participatory methodologies were used to ensure the participation of women, indigenous people, Afro-descendants, young people and members of communities without property rights. Local stakeholders and existing governance structures were considered in decision-making, as well as indigenous peoples' knowledge and traditions.

